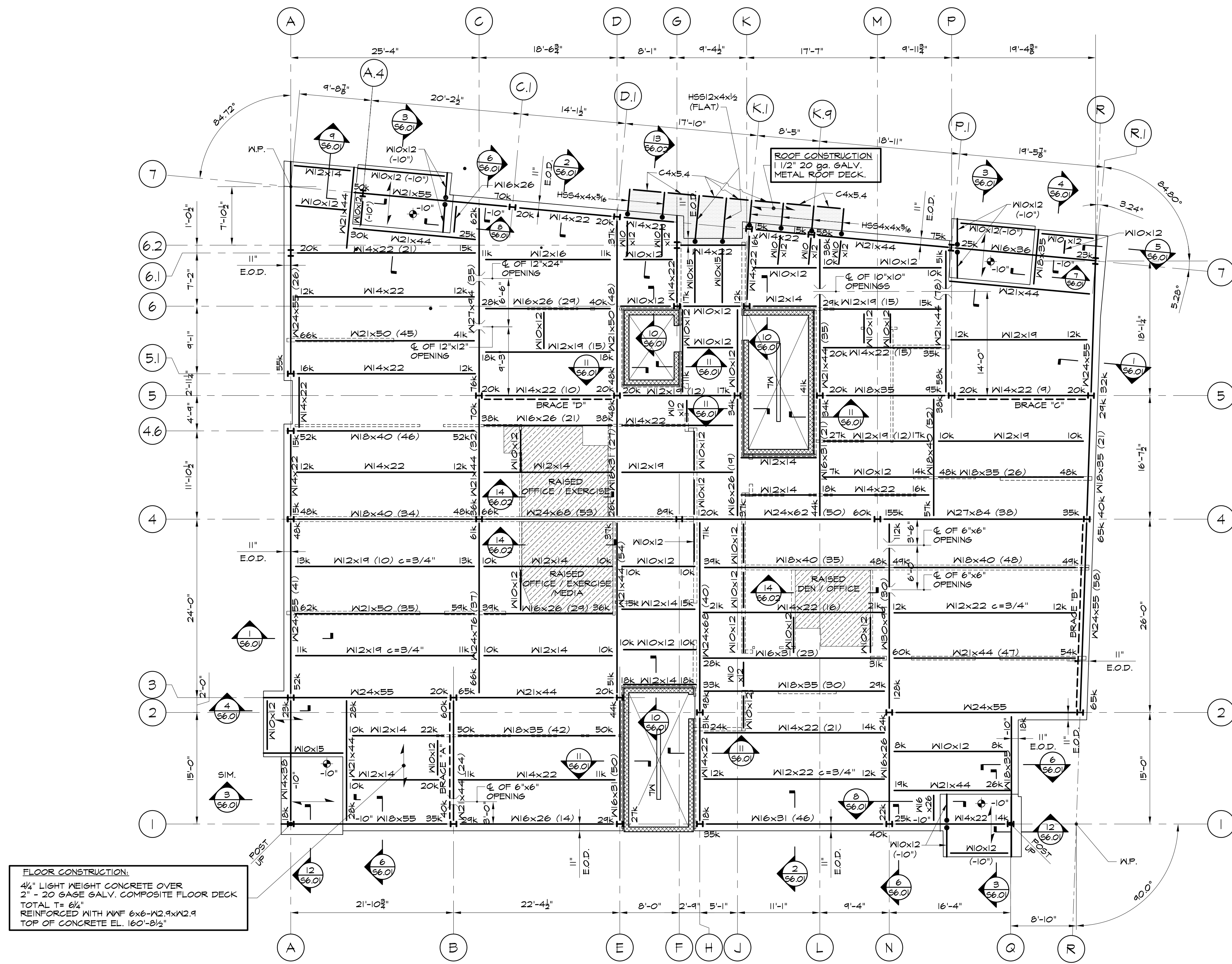




Reviewed for Code Compliance
Inspection Division
Approved with Conditions
Date: 05/16/14



SECOND FLOOR FRAMING PLAN
1/8"=1'-0"

- FLOOR FRAMING NOTES:
1. FOR TYPICAL DETAILS AND GENERAL NOTES SEE DRAWINGS S2.01 TO S2.03.
 2. TOP OF STEEL SHALL BE AT EL. 160'-2 1/4" UNLESS NOTED OTHERWISE.
 3. (± 0") INDICATES DEVIATION FROM TOP OF STEEL ELEVATION.
 4. "C..." INDICATES COLUMN MARK. FOR COLUMN AND BASE PLATE SIZES SEE COLUMN SCHEDULE DRAWING S2.04.
 5. "(X)" INDICATES THE NUMBER OF EQUALLY SPACED 3/4" DIA. x 4" LONG HEADED SHEAR STUDS.
 6. "EOD" INDICATES EDGE OF FOUR STOP AND / OR EDGE OF DECK. DIMENSION FROM COLUMN GRIDLINE OR C. OF BEAM IF NO COLUMN GRIDLINE.
 7. USE CHAIRS SPACED AT 4'-0" O.C. TO SUPPORT #4 BARS TO PROVIDE 1" CLEAR COVER.
 8. "49K" INDICATES CONNECTION DESIGN SHEAR (ASD). IF REACTION IS NOT SHOWN, REFER TO SPECIFICATIONS & GENERAL NOTES.
 9. "c=..." INDICATES AMOUNT OF CAMBER.
 10. INDICATES SEISMIC MOMENT CONNECTION. INDICATES GRAVITY MOMENT CONNECTION. FOR DETAILS SEE DRAWING S2.04.
 11. "BRACE X" INDICATES A BRACED FRAME. SEE DRAWING S3.02 FOR BRACE ELEVATIONS AND DETAILS.
 12. "TOC EL." INDICATES TOP OF CONCRETE SLAB ELEVATION.
 13. "TOS EL." INDICATES TOP OF STEEL ELEVATION.
 14. "BOS EL." INDICATES BOTTOM OF STEEL ELEVATION.
 15. INDICATES SPAN OF METAL DECK.
 16. INDICATES WEB OPENING AT MIDHEIGHT OF BEAM. SEE PLAN FOR OPENING SIZE AND LOCATION.

Prepared For: 118 on Munjoy Hill, LLC 118 CONGRESS STREET PORTLAND, ME 04101	
Consultant: VEITAS VEITAS engineers 699 Grand Street, Suite 301 Portland, Maine 04101 TEL: (207) 772-4056 FAX: (207) 772-4056	
Architect: ARCHITECTYPE Architects 48 Union Wharf Portland, Maine 04101 (207) 772-6022 Fax (207) 772-4056	
Project: 118 ON MUNJOY HILL 118 CONGRESS STREET PORTLAND, MAINE	
Revisions: 100% CONSTRUCTION DOCUMENTS	
Date: 5 MAR 2014	Scale: As indicated
SECOND FLOOR FRAMING PLAN	
S1.02	